



Gz- α Polyclonal Antibody

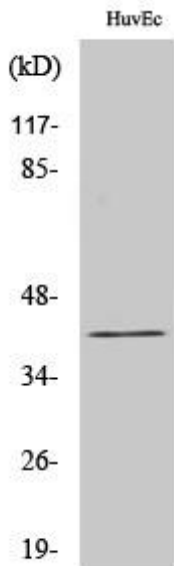
Catalog No	YP-Ab-16170
Isotype	IgG
Reactivity	Human;Mouse;Rat;Monkey
Applications	WB;IHC;IF;ELISA
Gene Name	GNAZ
Protein Name	Guanine nucleotide-binding protein G(z) subunit alpha
Immunogen	The antiserum was produced against synthesized peptide derived from human Gz-alpha. AA range:1-50
Specificity	Gz- α Polyclonal Antibody detects endogenous levels of Gz- α protein.
Formulation	Liquid in PBS containing 50% glycerol, 0.5% BSA and 0.02% sodium azide.
Source	Polyclonal, Rabbit,IgG
Purification	The antibody was affinity-purified from rabbit antiserum by affinity-chromatography using epitope-specific immunogen.
Dilution	WB: 1/500 - 1/2000. IHC: 1/100 - 1/300. ELISA: 1/40000.. IF 1:50-200
Concentration	1 mg/ml
Purity	$\geq 90\%$
Storage Stability	-20°C/1 year
Synonyms	GNAZ; Guanine nucleotide-binding protein G(z) subunit alpha; G(x) alpha chain; Gz-alpha
Observed Band	41kD
Cell Pathway	Membrane; Lipid-anchor.
Tissue Specificity	Brain,PNS,
Function	function:Guanine nucleotide-binding proteins (G proteins) are involved as modulators or transducers in various transmembrane signaling systems.,similarity:Belongs to the G-alpha family. G(i/o/t/z) subfamily.,subunit:G proteins are composed of 3 units; alpha, beta and gamma. The alpha chain contains the guanine nucleotide binding site.,
Background	G protein subunit alpha z(GNAZ) Homo sapiens The protein encoded by this gene is a member of a G protein subfamily that mediates signal transduction in pertussis toxin-insensitive systems. This encoded protein may play a role in maintaining the ionic balance of perilymphatic and endolymphatic cochlear fluids. [provided by RefSeq, Jul 2008],
matters needing attention	Avoid repeated freezing and thawing!



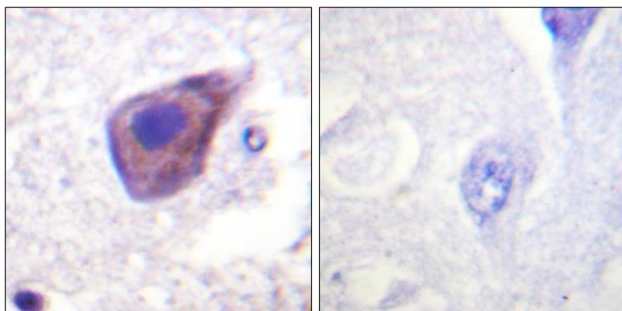
Usage suggestions

This product can be used in immunological reaction related experiments. For more information, please consult technical personnel.

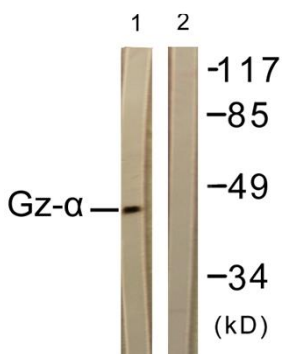
Products Images



Western Blot analysis of various cells using Gz- α Polyclonal Antibody



Immunohistochemistry analysis of paraffin-embedded human brain tissue, using Gz-alpha Antibody. The picture on the right is blocked with the synthesized peptide.



Western blot analysis of lysates from COS7 cells, treated with PMA 125ng/ml 30', using Gz-alpha Antibody. The lane on the right is blocked with the synthesized peptide.